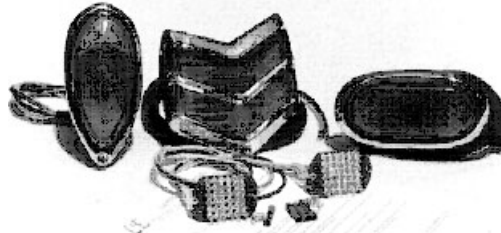




LED Taillight Conversion Units
Awarded "Best New Safety Related Street Rod Product" for 1996 at the National Street Rod Association's nationals in Columbus, Ohio



Lambert Enterprises was the first to manufacture LED conversion kits to convert most taillights to LED systems. We were also the first to incorporate brake and taillight functions directly on the LED cards.



Turn Signal Sequencer
Awarded "Best New Street Rod Product" for 2003, at the National Street Rod Association's nationals in Louisville, KY
See page 7 for more details

'39 Ford Owned and built by Paul Funkhouser

The taillights were special built per Paul's design with special lenses and one-of-a-kind LED cards the same shape as the lenses.



Many shapes and sizes of stock LED systems are available (see pages 4 & 5)

We also offer:

**OEM Applications
One-of-a-Kind custom LED cards with lens**

If you don't see what you are looking for just give us a call and we will see what can be done to get you exactly what you want.



**Rod & Custom's Project 37 built by Motorsport Direct (Jim White)
Featured in R&C Dec, 03
uses the LE-300-34-ST-TL 34" taillight**



Our LED cards have both brake / turn signals and taillight for rear use or turn and running light functions for the front. LEDs are very bright, generate virtually no heat, use very little power, and have an extremely long life. LED lights are a great added safety feature to your ride.

LED conversion units for many street rods are shipped as kits. Standard kits are 12 volt, however many kits are available in 6 volt positive or negative ground by request. (see price list for complete model list and 6 volt availability)

Conversion kits include mounting brackets (where needed), hardware and detailed instructions so you can easily install them in your existing housings to convert your lights to our brighter and safer LED system.

LED conversion units have been installed in street rods, pick-ups, customs cars, Harley and other motorcycles, busses, and trailers. These installations have been accomplished using both original taillight housings and custom housings. **If your particular application is not listed in our price sheet please give us a call. In most cases we can supply you with what is needed to convert your existing lights to our LED systems.**

Many of our **3rd brake lights** are designed to operate as a normal 3rd brake light or may optionally be connected to operate as a 3rd brake light and turn signals. Many lengths are available. Please call for details. (see page 6)

Some of our LED cards are designed so they can be connected end-to-end and stacked to form many different configurations.

ONE-OF-A-KIND LED CARDS AND LENSES THE WAY YOU WANT THEM:

If you have an application that requires a special size or shaped LED card we are able to do it!!! Give us a call with your idea and we will take it from there. We will machine lenses to match your one-of-a-kind card(s). Pricing of the one-of-a-kind LED cards depend on shape and size. See Paul Funkhouser's 39 Ford taillights on the flyer's cover.

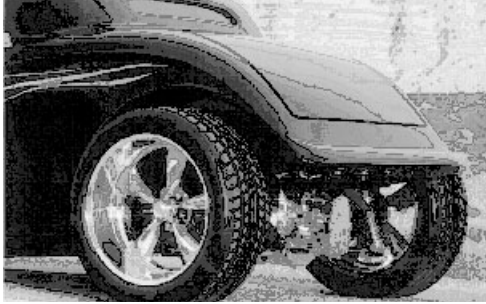
We have in-house capability to cut **one-of-a-kind lenses** for special applications to be used with our LED systems (lenses not sold separately). Clear lenses are used for flush mounting front turn signals so you won't have a yellow square in your paint.

OEM APPLICATIONS:

Lambert Enterprises also manufacture LED systems for OEM applications for many Street Rod vendors and Motorcycle companies to be incorporated into their existing product or for installation in a completely new design. If you have such an application please give us a call we will be more than happy to work with you during the design of your product to insure that you get exactly what you want.



**Dan Pirolli's '32 Ford
Shown with Flush
Mounted LE-300-11"
Taillights**



**'33 Ford SpeedStar by Alloway's Rod Shop
LE-300-34-SS with 3/4" x 34" lens.**

Flush Mounting Systems With 3/4" x 34" Lenses

The following LED systems include lenses cut for a specific installation, the flush mounting lens is 3/4" x 34" and when finished is just as slick as your paint. Each system includes lens, LED cards, mounting hardware and aluminum mounting strip. Our Turn signal sequencer may be easily connected to any of these systems.

LE-300-34-ST-TL Straight lens

LE-300-34-SS-TL Thicker curved lens for the 33 Ford Alloway Speedstar (pictured above)

LE-300-34-CTC-TL Straight lens for the Coast-To-Coast body

LE-300-34-33F-TL Lens designed for 33-34 Fords

LE-300-34-37F-TL Lens designed for 37-39 Ford

LE-300-34-33M-TL Lens designed for 37 Minotti 37 Fords

LE-300-34-36P-TL Lens designed for 36-37 Plymouth

LE-300-34-W-TL Lens designed for 40-41 Willys

LE-300-17-TL-P Straight lenses for 17" Taillights, PAIR

Longer lengths are available, prices depend on the length. Please call for details. Many 60"+ LED systems have been built for pick-up trucks and trailers. All systems function as brake, turn, and taillights.

**Fiberglass Housings
for Flush Mounting Lens prices start at
\$39.95**



Housings are required when mounting the LED systems where they will be exposed to the weather such as under a fender or in a roll pan. Our housings are constructed of fiberglass and designed to allow you to cut and fit them before mounting to the body panel. A removable aluminum cover is included with the housings. The LEDs are to be mounted to the aluminum cover with hardware shipped with each LED card. Some LED kits are supplied with a pre-punched aluminum drilling template when multiple LED cards are used. Many sizes available, see price list. Shown here one 34" housing and i pair 11" housings.

**LE-BTL (Billet shown) or LE-FMTL
with stainless housings.
(LE-FMTL flush mounting not shown)**



LE-BTL: Taillights have CNC machined 6061 aluminum bezels that are 1 1/2" by 5 1/2" and only 1/4" thick with a lens opening of 1" x 4". Each taillight has a total of 48 high intensity red LEDs that operate as both brake and taillights.. The bucket is formed of 18-gauge stainless steel (Pictured Above)
LE-FMTL: The FMTL light is the same as the Billet light with the exception that the bezel is not used and the lenses are set up to be flush mounted. This system works great to mount taillights in your bumpers. The lenses may be sanded to the bumper's shape.



Build Your Own Custom LED Taillights or Front Turn Signals using our stock LED cards.

The following LED card descriptions are furnished so you can determine which card or cards will best fit your custom application. By custom application we mean that you can install them in your existing housings or fabricate new housings as needed. **Cards are available in singles or pairs and all have RED brake and taillight OR AMBER turn and running light functions.**

LE-100 LED cards: LED card has 36 high intensity LEDs arranged in a 2" round pattern. The physical size of the card is 2" x 3 1/2". The card may be shortened from 3 1/2" to 2 1/2" if needed. Each \$54.95, pair \$99.95.

LE-112 LED cards: LED card has 12 high intensity LEDs arranged in a 1/4" x 3" pattern. The physical size of the card is 7/16" x 3 5/8".

Each \$54.95, pair \$89.95.

LE-200 LED cards: LED card has 36 high intensity LEDs arranged in a 1 1/2" x 1 1/2" square pattern. The physical size of the card is 1 1/2" x 2 1/4".

Each \$54.95, pair \$99.95.

LE-215 LED cards: LED card has 30 high intensity LEDs arranged in a 5/8" x 3 1/2" pattern. The physical size of the card is 7/8 x 3 7/8".

Each \$54.95, pair \$99.95.

LE-300 LED cards: LED card has 28 high intensity LEDs arranged in a 1/2" x 5 3/4" pattern. The physical size of the card is 3/4" x 6".

Each \$54.95, pair \$99.95.

LE-300-12 LED cards: LED card has 12 high intensity LEDs arranged in a 1/2" x 2 1/2" pattern. The physical size of the card is 3/4" x 3 1/2".

Each \$54.95, pair \$99.95.

LE-301 LED cards: LED card has 24 high intensity LEDs arranged in a 1/4" x 5 3/4" pattern. The physical size of the card is 1/2" x 6 3/4".

Each \$54.95, pair \$99.95.

LE-315 LED cards: LED card has 45 high intensity LEDs arranged in a 3/4" x 3 1/2" pattern. The physical size of the card is 3/4" x 4 1/4". Each \$59.95, pair \$109.95.

LE-408 LED cards: LED card has 32 high intensity LEDs arranged in a 1" x 3" pattern. The physical size of the card is 1" x 3 3/4".

Each \$54.95, pair \$99.95.

LE-412 LED cards: LED card has 48 high intensity LEDs arranged in a 1" x 4" pattern. The physical size of the card is 1" x 4 1/2".

Each \$64.95, pair \$119.95.

LE-424 LED cards: LED card has 96 high intensity LEDs arranged in a 1" x 8" pattern. The physical size of the card is 1" x 8 1/2".

Each \$119.95, pair \$219.95.

LE-430 LED cards: LED card has 120 high intensity LEDs arranged in a 1" x 10" pattern. The physical size of the card is 1" x 10 3/8".

Each \$164.95, pair \$319.95.

LE-612 LED cards: LED card has 24 high intensity LEDs arranged in a 1/4" x 7 1/2" pattern. The physical size of the card is 1/2" x 8 1/2".

Each \$54.95, pair \$99.95

LE-812 LED cards: LED card has 96 high intensity LEDs arranged in a 2 1/4" x 3 3/4" pattern. The physical size of the card is 2 1/2" x 4".

Each \$119.95 pair \$219.95

LE-FTS-6 LED cards: LED card has 6 high intensity LEDs arranged in a 1/4" x 1 3/4" pattern. The physical size of the card is 2 1/2" x 4".

Each \$39.95 pair \$69.95

LE-OVL-6 LED cards: LED card has 56 high intensity LEDs arranged in a 2" x 6" pattern. The physical size of the card is 2" x 6".

Each \$69.95 pair \$134.95

LE-2x4 LED cards: LED card has 8 high intensity LEDs arranged in a 1/2" x 1" pattern. The physical size of the card is 1/2" x 1 1/2". Pair \$49.95

LE-1x3 LED cards: LED card has 3 high intensity LEDs arranged in a 1/4" x 3/4" pattern. The physical size of the card is 1/4" x 1". Pair \$24.95

LE-D68 LED cards: LED card has 68 high intensity LEDs arranged in a 4" x 6" diamond shaped pattern. The physical size of the card is 4" x 6". May be build for a motorcycle with turn signals in each in in the shape of an arrow. Each \$104.95 pair \$209.95

LE-R6 6 LEDs - 3/4" diameter \$ 54.95 per pair

LE-R20 20 LEDs - 1 3/4" diameter \$ 79.95 per pair

LE-R48 48 LEDs - 3" diameter \$129.95 per pair

LE-R16 16 LEDs - 1 1/8" diameter \$ 69.95 per pair

LE-R24 24 LEDs - 2 1/2" diameter \$ 89.95 per pair

LE-R64 64 LEDs - 4 1/2" diameter \$169.95 per pair



Lambert Enterprises

LED Automotive Lighting Systems

Proudly Made in
Norris, TN USA

LE-100



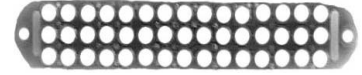
LE-200



LE-215



LE-315

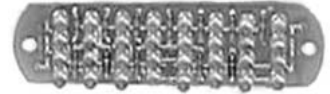


LE-300



All LED cards are
available in either
RED or AMBER

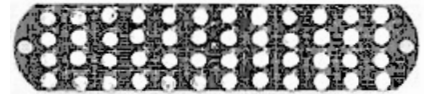
LE-408



LE-300A-12



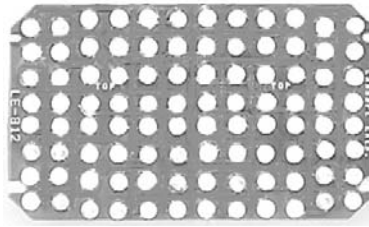
LE-412



LE-FTS-6



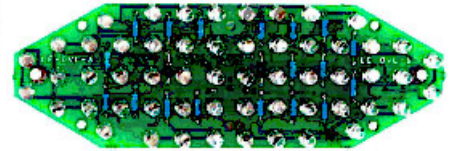
LE-812



LE-112A



LE-OVL-6



LE-301



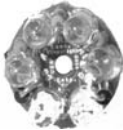
LE-424



LE-430



LE-R6



LE-R16



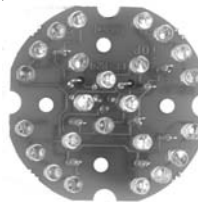
LE-R20



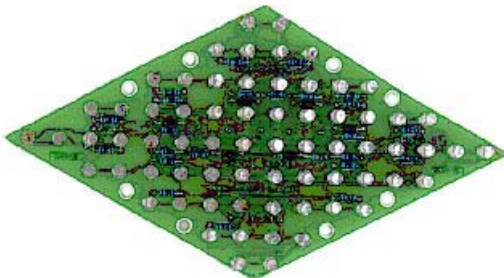
LE-R64



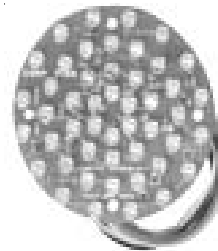
LE-R24



LE-D68



LE-R48



Call for more
information on
Flush Mount
Turn signals



LE-PM3rd Pedestal Mount



The 3rd brake light housing is machined from 6061 billet aluminum and is 3/4" high, 7" long, and 1" deep. The unit contains 24 high intensity LEDs and is mounted on a 1" high pedestal that may be tilted for easy mounting. The LEDs may be wired as a 3rd brake light only or as a 3rd brake light with right and left turn signals. Satin \$94.95 or Polished \$109.95.

Flush Mounting 3rd Brake Lights

LE-301-SW-BL - Split Window 3rd Brake Light with 1/4" x 5 3/4" lens. Designed to be mounted vertically between split windows. LEDs are placed at correct angle for optimum viewing. \$75.95 each

LE-300-BL - 3rd Brake Light 1/2" x 5 3/4" lens, \$ 59.95 each

The following may be connected to operate as 3rd brake and turn signals:

LE-300-11-BL - 3rd Brake Light with 1/2" x 11 1/2" lens \$109.95 each

LE-300-17-BL - 3rd Brake Light with 3/4" x 17" lens \$159.95 each

LE-301-BL - 3rd Brake Light with 1/4" x 5 3/4" lens \$59.95 each

LE-612-BL - 3rd Brake Light with 1/4" x 7 1/2" lens \$69.95 each

LE-424-BL - 3rd Brake Light with 1" x 8" lens \$119.95 each

All 3rd brake lights are shipped with mounting brackets. Other lengths available, call for details.



LE-301-BL



License Light Block

LE-LLBlock License light block:

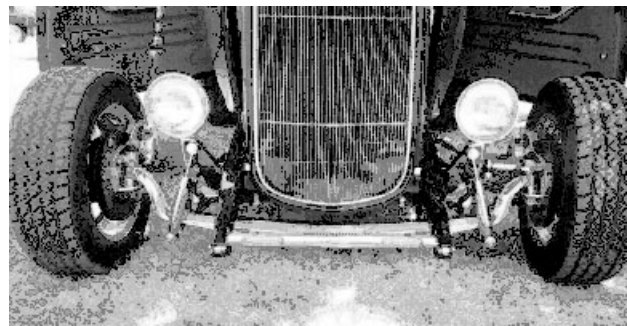
LED card has 3 high intensity WHITE LEDs sealed in a 1/2" x 1/2" x 2-1/8" CLEAR block. Each \$29.95

'32 Ford Spreader Bars

Both units are made of 16 gauge polished stainless. Mounting flanges are 6061-T6 billet aluminum 3/4" thick. Provisions have been made to allow you to "roll" the bar and aim the LED lights parallel with the ground. LE-SBF-32F - 48 Amber LEDs per light \$269.95
LE-SBR-32F - 96 RED LEDs per light \$319.95
The wiring for both bars is routed through flanges so it is hidden inside the frame rails out of sight.



**George Tacub's '32 Ford
LE-SBF-32F FRONT SPREADER BAR**



**Skip Walls' '32 Ford
LE-SBR-32F REAR SPREADER**



License Light with Flush Mount Lens

LE-1x3 Flush Mount Lens

LED card has 3 high intensity WHITE LEDs in a 1/4" x 3/4" pattern. The physical size of the card is 1/4" x 1". Each \$24.95

LE-1x3LL Flush Mount Lens

LED card has 3 high intensity WHITE LEDs in a 1/4" x 1 3/4" pattern. The physical size of the card is 1/4" x 2 1/2". Each \$24.95



Turn Signal Sequencer

Awarded "Best New Street Rod Product"
for 2003, at the National Street Rod Association's
nationals in Louisville, KY



The LE-SEQ-x may be ordered to operate either 3, 4, or 5 LED or bulb REAR turn signals per side..

As an add-on (factory installed) option the sequencer may be configured to operate the front turn signals and dash indicators. This option also eliminates the need for loads to force your standard flasher to operate correctly or special electronic flashers which are extremely expensive.

The system operates the brake lights, turn signals and hazzard functions as follows:

Brake applied.without turn signals on: all brake lights on.

Brake released without turn signals on: all brake lights off..

RIGHT turn signal on: RIGHT turn signal sequence starting in the center and progressing either 3, 4, or 5 steps (depending on ordered configuration) then the turn signal goes out and start over until the turn function is canceled. The LEFT brake light will operate as a normal brake light with all LEFT side LEDs or bulbs being turned on and off at the same time.

LEFT turn signals as above only reversed.

HAZZARD Flasher on:

Brakes lights are disabled with hazzard switch in the on position. Both the LEFT and RIGHT turn signals sequence from the center out then turn off and the sequence starts again until the hazzard switch is turned off.

The sequencer may be added to either new or existing multiple brake light systems with LEDs or conventional bulbs.



LE-TSFL Turn Signal Flasher Load

When using LED taillights and LED front turn signals or small front turn signal bulbs you will need to load the turn signal flasher to make the turn signals operate correctly. A single LE-TSFL will load the turn signals and hazzard flasher.



LE-RCC Relay for Cruise Control

This unit is required for your Cruise Control to operate when using LED taillights. Supplied with wiring and instructions



LE-NLF No Load Flasher

To be used to replace your standard two pin flasher when using LEDs.



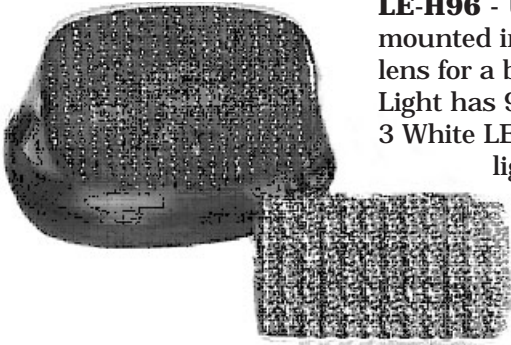
LE-BLP "Notifier" 3rd brake light pulser

The LE-BLP is a great SAFETY FEATURE that may be easily wired into your 3rd brake light wiring by connecting it between the existing brake light wire and 3rd brake light.

When the brakes are applied the 3rd brake light will pulse three times then lock on until the brake pedal is released.



Motorcycle LED Lighting

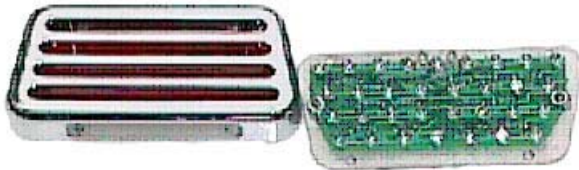


LE-H96 - Unit is shipped mounted in a new Harley lens for a bolt-on installation. Light has 96 Red LEDs and 3 White LEDs for license light.
Compatible for '72 to current.
\$124.95



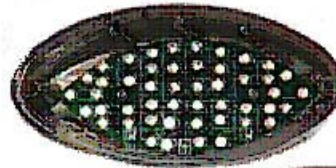
LE-HTS-A or R (Red or Amber) Harley LED Turn Signal Conversion, easily installed in your housings \$99.95 pair

LE-SB PRO-ONE "ShowBike" LED Conversion Brake & Taillight, has white LEDs for license light. Fits easily in your housing without modifications. \$79.95 each

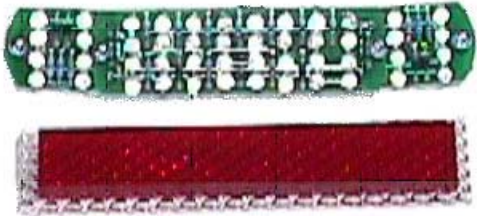


LE-V-Max Billet Taillight
Bolt in replaces for your plastic reflector. Has 48 High Intensity LEDs for brake and taillight.
\$179.95 ea.

LE-408-TLTS \$99.95 each, pictured
LE-412-TLTS \$119.95 each
fiberglass housing available



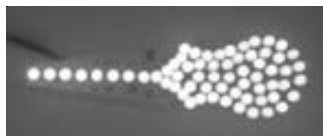
LE-CE1 CatEye \$99.70
Brake, Taillight, White LEDs for license light. Unit is shipped assembled.



The LE-408-TLTS has a 1: x 5" flush mounting lens with a 1" right and 1" left turn signals, 3" brake light. The entire 5" is configured as a taillight. LE-412 TLTS is 1" longer



Carl Williams' Motorcycle fender with a special brake & taillight lens in the shape of a bat



Special one-of-a-kind LED systems are hand-built to any shape, supplied with CNC cut flush mount lenses.

Please see page (4) for a complete listing of all our LED cards. These LED cards may be mounted in your existing housing. If you need help deciding which LED card will fit your housing give us a call, we will be glad to assist you.



"T Bucket" built by Total Performance, Inc. and may be seen in their booth in many shows.

The Taillight shown in the left photo is our LE-300-TL



These are samples of a few of the lenses that we have cut for special applications.

This hand-built LED system was designed for a Motorcycle application. The taillight lights everything except the mouth, when the brake is applied the entire LED system gets brighter and the mouth comes on grinning at you. It is shown with the brake light on.





Lambert

LED Automotive Lighting Systems

Enterprises

*LED Lighting Systems
For Street Rods, Customs, Pick-ups, Motorcycles,
and trailers*



**Rod & Custom's Project 37
built by**

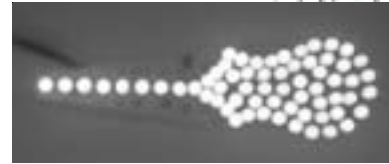
Motorsport Direct (Jim White)

Featured in R&C Dec, 03

uses LE-300-34-STTL 34" taillight

Many shapes and sizes of stock LED systems are available. If you don't see what you are looking for just give us a call and we will see what can be done to get you exactly what you want.

Carl Williams' Motorcycle fender with a special brake & tail-light lens in the shape of a bat



Special one-of-a-kind LED systems are hand-built to any shape that you like, supplied with CNC cut flush mount lenses.

www.lambertenterprises.com

e-mail: led.info@lambertenterprises.com



Lambert Enterprises

PO Box 367

Norris TN 37828-0367 USA

Phone: 865.494.9850

FAX: 865.494.2453